

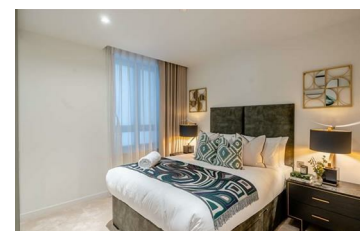


## Garrett Mansions, W2

**£1,725 Per Week**

A luxurious interior designed three-bedroom 2nd floor apartment set over 1023 SqFt comprising a large open-plan reception room leading onto a private balcony. The fully integrated kitchen with appliances from Siemens and Miele including oven and induction hobs, large fridge freezer and dishwasher and wine chiller all inset into a composite stone work tops. The apartment has two double bedrooms with the master including an En-suite and a family bathroom. The whole apartment also benefits from comfort cooling.

This apartment comes complete with large Samsung Smart TVs and Samsung sound bar and is offered with full use of the onsite facilities including Gym, pool, residence lounge area, private dining room, conference facilities, 24 hour concierge and Cinema room. The apartment is ready to move into with internet already connected.



Energy Efficiency Rating		Environmental Impact (CO <sub>2</sub> ) Rating	
Current	Target	Current	Target
<b>A</b>	<b>A</b>	<b>B</b>	<b>B</b>
100 kWh/m <sup>2</sup> /year	100 kWh/m <sup>2</sup> /year	100 g/m <sup>2</sup> /year	100 g/m <sup>2</sup> /year
90 kWh/m <sup>2</sup> /year	90 kWh/m <sup>2</sup> /year	90 g/m <sup>2</sup> /year	90 g/m <sup>2</sup> /year
80 kWh/m <sup>2</sup> /year	80 kWh/m <sup>2</sup> /year	80 g/m <sup>2</sup> /year	80 g/m <sup>2</sup> /year
70 kWh/m <sup>2</sup> /year	70 kWh/m <sup>2</sup> /year	70 g/m <sup>2</sup> /year	70 g/m <sup>2</sup> /year
60 kWh/m <sup>2</sup> /year	60 kWh/m <sup>2</sup> /year	60 g/m <sup>2</sup> /year	60 g/m <sup>2</sup> /year
50 kWh/m <sup>2</sup> /year	50 kWh/m <sup>2</sup> /year	50 g/m <sup>2</sup> /year	50 g/m <sup>2</sup> /year
40 kWh/m <sup>2</sup> /year	40 kWh/m <sup>2</sup> /year	40 g/m <sup>2</sup> /year	40 g/m <sup>2</sup> /year
30 kWh/m <sup>2</sup> /year	30 kWh/m <sup>2</sup> /year	30 g/m <sup>2</sup> /year	30 g/m <sup>2</sup> /year
20 kWh/m <sup>2</sup> /year	20 kWh/m <sup>2</sup> /year	20 g/m <sup>2</sup> /year	20 g/m <sup>2</sup> /year
15 kWh/m <sup>2</sup> /year	15 kWh/m <sup>2</sup> /year	15 g/m <sup>2</sup> /year	15 g/m <sup>2</sup> /year
10 kWh/m <sup>2</sup> /year	10 kWh/m <sup>2</sup> /year	10 g/m <sup>2</sup> /year	10 g/m <sup>2</sup> /year
5 kWh/m <sup>2</sup> /year	5 kWh/m <sup>2</sup> /year	5 g/m <sup>2</sup> /year	5 g/m <sup>2</sup> /year
0 kWh/m <sup>2</sup> /year	0 kWh/m <sup>2</sup> /year	0 g/m <sup>2</sup> /year	0 g/m <sup>2</sup> /year

England & Wales 2008/1/EC